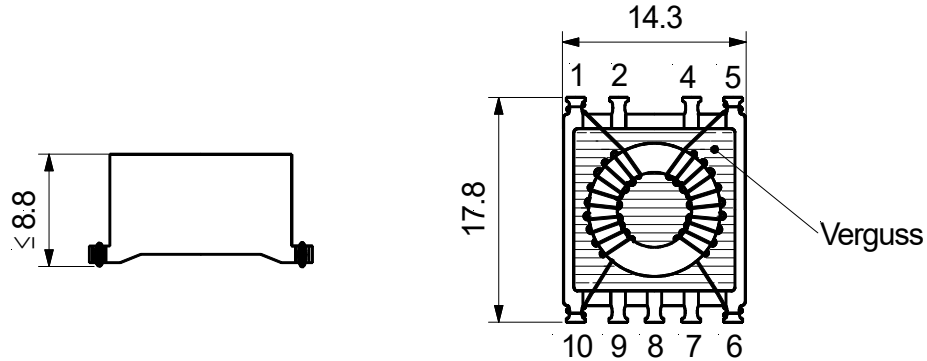


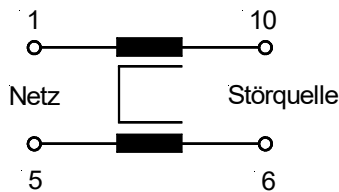
Übertrager SM-R 10

00 5536 40 Ind. 8

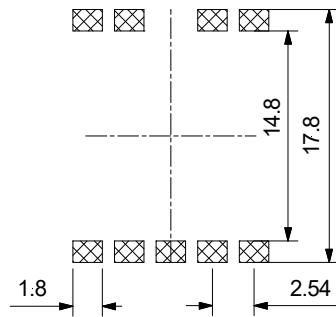


Kennzeichn.: Aufdruck BV Nr., 2x L in mH, Herstelldatum nach DIN EN 60062 + NEOSID. Einh.: mm

Schaltung



Lötflächen - Empfehlung



Lötbar nach IPC/JEDEC J-STD-020-D

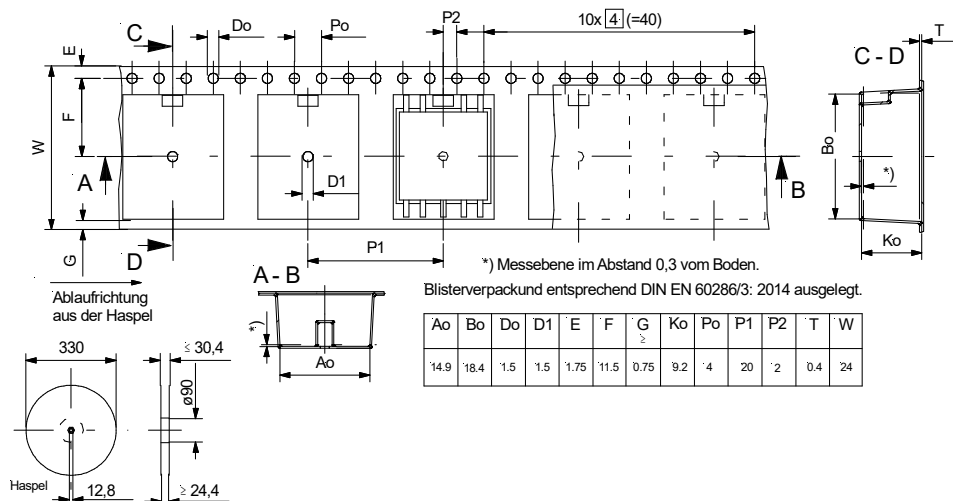
Prüfung:

Wickl.-Nr.:	L [mH]	$\pm$ %	$f_{mess}$ [kHz]	$L_{S,Typ}$ [ $\mu$ H]	$I_{max}$ [A]	$R_{DC 20^\circ C \leq}$ (2x) [ $\Omega$ ]	$U_{AC:A1-A2}$ 50 Hz, 2 s. [kV]	Bemerkung
1 + 2	47,0	+25/-45	2	96	0,5	1	0,5	

Betriebstemperaturbereich : -40° C bis +85° C. Max. Löttemperatur: 260° C, 10 Sek.

Lager- und Transportbedingungen (in Blistergurt): +10°...+40° C;  $\leq 70\%$  rel. Luftfeuchtigkeit, dunkel lagern- und transportieren.

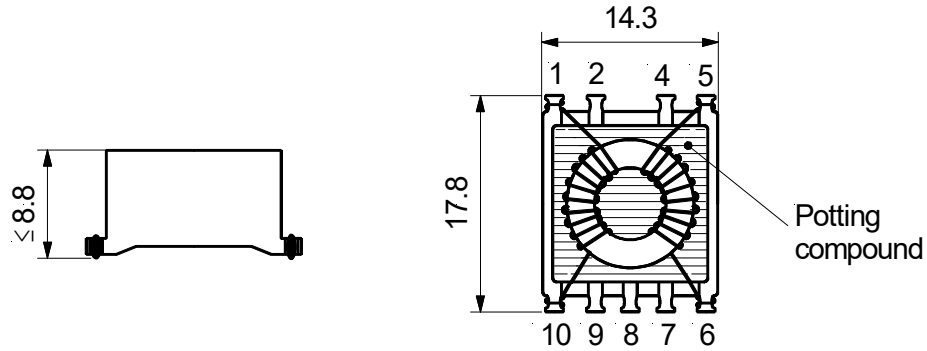
Blisterverpack: 79941542  
VPE = 350 Stck. / Rolle



Alle Angaben ohne Gewähr. Irrtümer und Änderungen vorbehalten. No responsibility is taken for the correctness. Errors and changings reserved.

**Transformer SM-R 10**

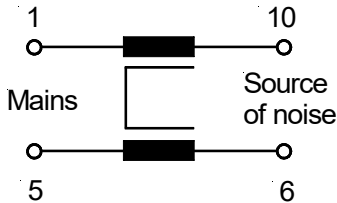
**00 5536 40 Rev. 8**



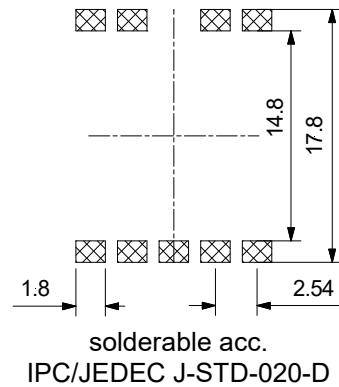
Marking.: Print part No., 2x L in mH, product. date acc. DIN EN 60062 + NEOSID

Dim.: mm

*Circuit*



*Recommended pad pattern*



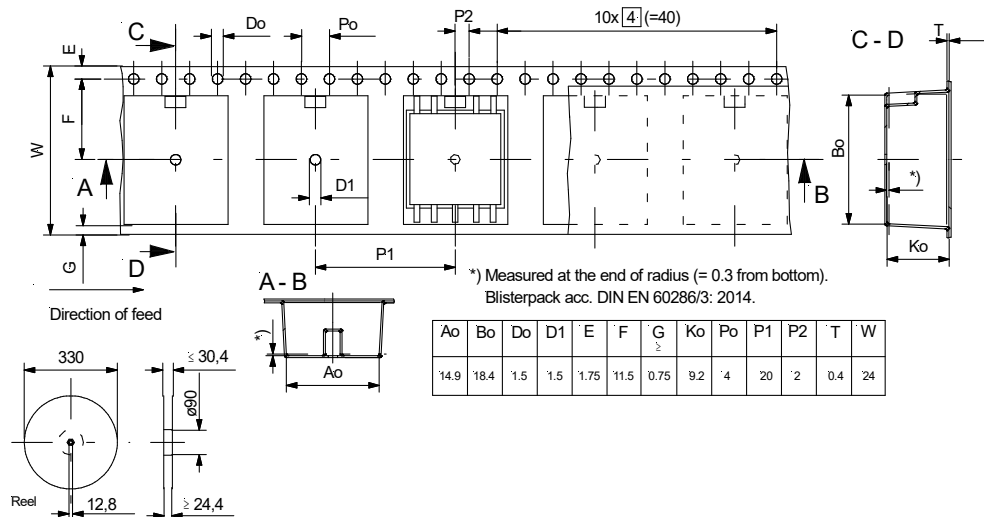
**Testing:**

Wind.- No.:	L [mH]	$\pm$ %	$f_{meas}$ [kHz]	$L_{S,Typ}$ [ $\mu$ H]	$I_{max}$ [A]	$R_{DC\ 20^\circ C \leq}$ (2x) [ $\Omega$ ]	$U_{AC:A1-A2}$ 50 Hz, 2 s. [kV]	Remark
1 + 2	47.0	+25/-45	2	96	0.5	1	0.5	

**Operating temperature range: -40° C bis +85° C. Max. soldering temperature: 260° C 10 Sek.**

Storage and transport conditions (in blisterpack): +10°...+40° C;  
≤70% rel. humidity, dark storage and transport conditions.

Packaging Blisterpack: 79941542  
Unit = 350 pcs. / reel



Ao	Bo	Do	D1	E	F	G	Ko	Po	P1	P2	T	W
14.9	18.4	1.5	1.5	1.75	11.5	0.75	9.2	4	20	2	0.4	24

Alle Angaben ohne Gewähr. Irrtümer und Änderungen vorbehalten. No responsibility is taken for the correctness. Errors and changings reserved.