

Vierfachverteiler

Four-way power combiner / divider

Kennzeichen

- 4-fach
- 0°
- Kompakte Bauform
- Automatisch bestückbar
- Für Reflow- und Dampfphasenlötung

Features

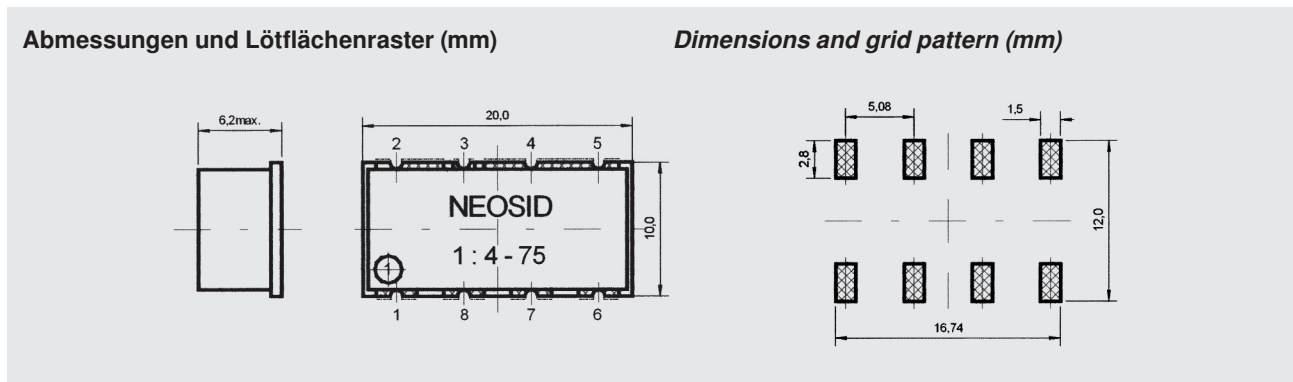
- 4 Way
- 0 Degree
- Compact design
- Suitable for automatic insertion
- For reflow and vapor phase soldering

Anwendungen

Zellular/GSM, UHF / VHF, Receiver/Transmitter, PCN/PCS, GPS, VSAT

Applications

Cellular/GSM, UHF / VHF, receivers/transmitters, PCN/PCS, GPS, VSAT



Betriebs-temperaturbereich:

-40°C bis +125°C

Max. Löttemperatur:

260°C, 10 Sek.

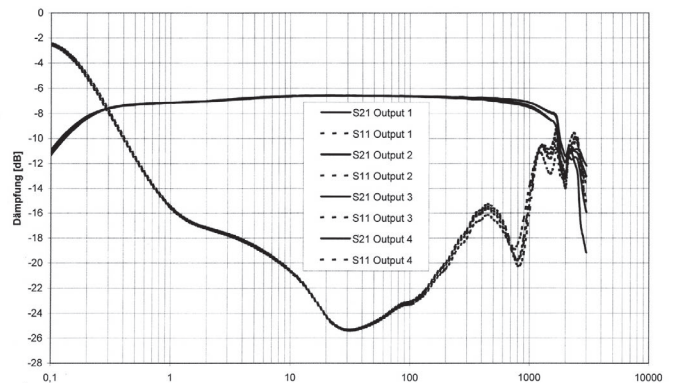
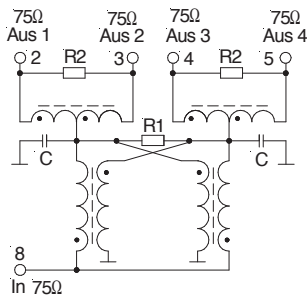
Operating temperature range:

-40°C bis +125°C

Max. soldering temperature

260°C, 10 sec.

f [MHz]	R [Ω]	Art.-Nr. Part number
5-1000	75	88 8015 24



Weitere Typen auf Anfrage
Other types on request